

Luminaire Property

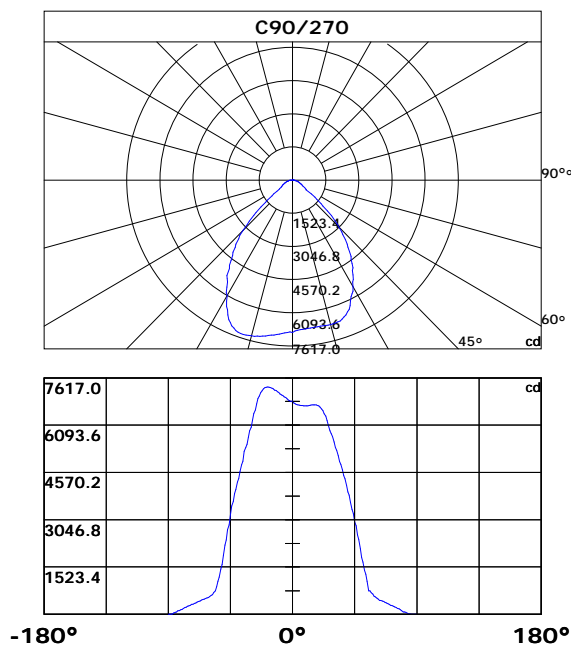
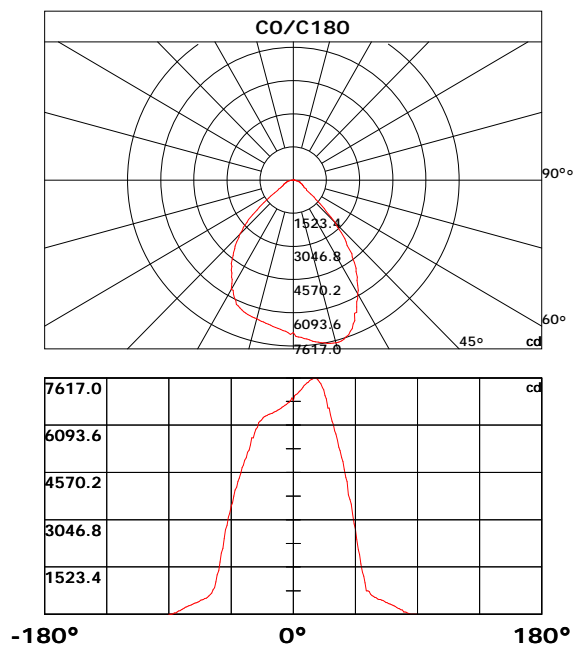
Luminaire Description: UFO-100W
 Luminaire Categorie:
 Lamp Categorie:
 Lamp Description:
 Number of Lamp:
 Lamp Lumens(lm): 12691.09
 Luminous Length(m):
 Luminous Width(m):
 Luminous Height(m):

Voltage: 231.2 V
 Current: 0.432 A
 Power: 99.45 W
 Power Factor: 0.994
 Test Lab:
 Photometric Type: Type C

Photometric Results

CIE Class: Direct
 Measurement Flux: 12691.09 lm
 Efficiency: 127.6128 lm/W
 Central Intensity: 6877.826cd
 Max. Intensity: 7616.965cd
 Field Angle(10%Imax): 113.55, 115.36

Max.Intensity Angle: C:330.0 G:17.0
 Beam Angle(50%Imax): 84.47, 86.82
 Luminaire Efficacy Rating(LER) : 100.00%
 Upward Ratio: 0.0%
 Downward Ratio: 100.0%



Light intensity data Unit[cd]

C\G	G0.0	G1.0	G2.0	G3.0	G4.0	G5.0	G6.0	G7.0	G8.0	G9.0
C0.0	6877.8	7052.0	7080.6	7105.6	7162.8	7195.0	7252.2	7316.6	7373.8	7402.4
C30.0	6877.8	6841.0	6876.7	6894.6	6937.5	6955.4	6998.3	7041.2	7062.7	7109.2
C60.0	6877.8	6819.5	6819.5	6823.1	6823.1	6826.7	6848.1	6855.3	6869.6	6876.7
C90.0	6877.8	6808.8	6780.2	6758.7	6751.6	6740.8	6726.5	6723.0	6715.8	6712.2
C120.0	6877.8	6873.1	6819.5	6794.5	6744.4	6697.9	6676.5	6640.7	6604.9	6590.6
C150.0	6877.8	6798.1	6769.4	6715.8	6687.2	6633.6	6590.6	6572.8	6529.8	6512.0
C180.0	6877.8	6969.7	6883.9	6830.2	6808.8	6758.7	6733.7	6694.3	6672.9	6633.6
C210.0	6877.8	6794.5	6762.3	6748.0	6730.1	6715.8	6697.9	6680.0	6672.9	6655.0
C240.0	6877.8	6819.5	6830.2	6837.4	6844.5	6858.8	6869.6	6876.7	6887.5	6901.8
C270.0	6877.8	6851.7	6883.9	6901.8	6941.1	6984.0	7001.9	7041.2	7062.7	7102.0
C300.0	6877.8	6959.0	7016.2	7048.4	7105.6	7162.8	7195.0	7252.2	7284.4	7373.8
C330.0	6877.8	6926.8	6959.0	7019.8	7052.0	7112.7	7144.9	7209.3	7280.8	7313.0
C360.0	6877.8	7052.0	7080.6	7105.6	7162.8	7195.0	7252.2	7316.6	7373.8	7402.4
C\G	G10.0	G11.0	G12.0	G13.0	G14.0	G15.0	G16.0	G17.0	G18.0	G19.0
C0.0	7456.0	7481.1	7527.6	7566.9	7581.2	7602.7	7602.7	7588.4	7549.0	7473.9
C30.0	7134.2	7177.1	7220.0	7241.5	7273.7	7298.7	7305.8	7305.8	7280.8	7259.4
C60.0	6894.6	6919.6	6930.4	6959.0	6976.9	7005.5	7019.8	7044.8	7055.5	7055.5
C90.0	6712.2	6715.8	6723.0	6737.3	6744.4	6748.0	6748.0	6744.4	6730.1	6719.4
C120.0	6562.0	6540.6	6529.8	6512.0	6512.0	6501.2	6490.5	6486.9	6476.2	6454.8
C150.0	6479.8	6465.5	6440.4	6422.6	6404.7	6397.5	6379.7	6368.9	6340.3	6293.8
C180.0	6597.8	6579.9	6551.3	6537.0	6508.4	6483.4	6469.1	6447.6	6436.9	6411.8
C210.0	6644.3	6630.0	6615.7	6608.5	6590.6	6576.3	6572.8	6554.9	6537.0	6526.3
C240.0	6908.9	6919.6	6933.9	6937.5	6941.1	6937.5	6933.9	6919.6	6905.3	6869.6
C270.0	7144.9	7166.4	7209.3	7223.6	7259.4	7277.2	7298.7	7316.6	7323.7	7316.6
C300.0	7402.4	7431.0	7488.2	7506.1	7538.3	7552.6	7559.7	7549.0	7534.7	7488.2
C330.0	7380.9	7445.3	7477.5	7534.7	7581.2	7595.5	7613.4	7617.0	7617.0	7588.4
C360.0	7456.0	7481.1	7527.6	7566.9	7581.2	7602.7	7602.7	7588.4	7549.0	7473.9
C\G	G20.0	G21.0	G22.0	G23.0	G24.0	G25.0	G26.0	G27.0	G28.0	G29.0
C0.0	7427.4	7298.7	7234.3	7048.4	6948.2	6640.7	6640.7	6426.1	6215.2	6115.0
C30.0	7187.8	7084.1	7019.8	6851.7	6665.7	6565.6	6361.8	6261.6	6057.8	5854.0
C60.0	7037.6	6994.7	6959.0	6869.6	6748.0	6680.0	6519.1	6343.9	6254.5	6068.5
C90.0	6672.9	6608.5	6562.0	6454.8	6390.4	6243.8	6082.8	5911.2	5818.2	5728.8
C120.0	6426.1	6386.8	6358.2	6297.4	6261.6	6172.2	6068.5	6011.3	5879.0	5803.9
C150.0	6268.8	6204.4	6125.8	6032.8	5982.7	5868.3	5807.5	5668.0	5596.5	5442.7
C180.0	6386.8	6368.9	6318.9	6261.6	6222.3	6183.0	6029.2	5968.4	5836.1	5689.5
C210.0	6497.7	6476.2	6422.6	6351.0	6254.5	6254.5	6072.1	6000.6	5843.2	5757.4
C240.0	6805.2	6765.9	6658.6	6594.2	6454.8	6279.5	6186.5	5989.9	5893.3	5696.6
C270.0	7305.8	7266.5	7198.6	7148.5	7030.5	6951.8	6776.6	6576.3	6465.5	6247.3
C300.0	7452.5	7355.9	7227.2	7144.9	6959.0	6751.6	6640.7	6415.4	6190.1	6075.7
C330.0	7534.7	7534.7	7395.3	7330.9	7180.7	6994.7	6894.6	6683.6	6572.8	6361.8
C360.0	7427.4	7298.7	7234.3	7048.4	6948.2	6640.7	6640.7	6426.1	6215.2	6115.0

Light intensity data Unit[cd]

C\G	G30.0	G31.0	G32.0	G33.0	G34.0	G35.0	G36.0	G37.0	G38.0	G39.0
C0.0	5907.6	5803.9	5596.5	5385.5	5274.7	5045.8	4924.2	4670.3	4409.3	4273.4
C30.0	5753.8	5550.0	5449.9	5238.9	5135.2	4920.6	4695.3	4580.9	4344.9	4219.7
C60.0	5882.6	5789.6	5607.2	5514.3	5328.3	5131.6	5038.6	4842.0	4741.8	4534.4
C90.0	5550.0	5371.2	5278.2	5103.0	4924.2	4834.8	4652.4	4466.5	4366.3	4151.8
C120.0	5650.1	5567.9	5399.8	5228.2	5145.9	4970.7	4795.5	4706.1	4513.0	4330.6
C150.0	5289.0	5210.3	5049.4	4967.1	4802.6	4720.4	4555.9	4387.8	4291.2	4105.3
C180.0	5689.5	5457.0	5292.5	5213.9	5049.4	4967.1	4802.6	4720.4	4552.3	4380.6
C210.0	5578.6	5396.2	5306.8	5128.0	5024.3	4849.1	4673.9	4584.5	4412.8	4319.9
C240.0	5600.1	5407.0	5224.6	5131.6	4949.2	4859.8	4673.9	4480.8	4384.2	4184.0
C270.0	6022.1	5914.8	5693.1	5482.1	5371.2	5253.2	4927.8	4820.5	4602.4	4377.1
C300.0	5854.0	5625.1	5510.7	5278.2	5042.2	4920.6	4663.2	4541.6	4262.6	3990.9
C330.0	6147.2	6147.2	5828.9	5718.1	5492.8	5381.9	5153.1	4909.9	4770.4	4570.2
C360.0	5907.6	5803.9	5596.5	5385.5	5274.7	5045.8	4924.2	4670.3	4409.3	4273.4
C\G	G40.0	G41.0	G42.0	G43.0	G44.0	G45.0	G46.0	G47.0	G48.0	G49.0
C0.0	3847.8	3701.2	3551.7	3239.5	2914.8	2750.7	2417.4	2088.0	1925.7	1625.7
C30.0	3965.8	3542.4	3542.4	3256.7	3111.2	2809.3	2502.5	2349.5	2040.8	1743.7
C60.0	4316.3	4201.8	3962.3	3833.5	3576.0	3444.1	3163.0	2871.9	2722.1	2415.3
C90.0	3944.4	3837.1	3615.4	3377.2	3250.6	2982.8	2843.0	2560.1	2412.0	2116.3
C120.0	4241.2	4048.1	3851.4	3751.3	3543.1	3316.4	3198.8	2953.1	2825.8	2557.2
C150.0	4012.3	3819.2	3611.8	3506.3	3278.9	3149.1	2908.8	2647.7	2508.6	2226.1
C180.0	4284.1	4098.1	4005.2	3808.5	3593.9	3483.8	3247.8	3124.7	2864.4	2727.4
C210.0	4137.5	3951.5	3851.4	3644.0	3539.2	3304.3	3051.4	2918.0	2640.5	2345.9
C240.0	3969.4	3855.0	3601.1	3339.3	3053.6	2903.4	2588.0	2423.5	2089.1	1767.3
C270.0	4259.1	4019.5	3894.3	3629.7	3492.7	3197.7	2883.4	2723.5	2397.0	2230.0
C300.0	3851.4	3570.3	3423.3	3125.8	2814.3	2656.6	2335.2	2174.6	1853.1	1701.5
C330.0	4570.2	4105.3	3815.6	3665.4	3665.4	3036.8	2875.5	2544.0	2215.0	2053.0
C360.0	3847.8	3701.2	3551.7	3239.5	2914.8	2750.7	2417.4	2088.0	1925.7	1625.7
C\G	G50.0	G51.0	G52.0	G53.0	G54.0	G55.0	G56.0	G57.0	G58.0	G59.0
C0.0	1353.2	1230.2	1018.1	759.9	759.9	729.5	654.8	604.7	585.8	553.6
C30.0	1602.4	1338.2	1112.5	1014.5	756.7	730.2	685.5	617.6	570.7	552.1
C60.0	2260.4	1958.6	1671.4	1533.4	1263.1	1150.8	1047.4	873.3	739.9	646.5
C90.0	1824.5	1682.5	1415.0	1291.0	1070.3	756.3	756.3	694.5	649.1	580.0
C120.0	2282.2	2141.3	1863.5	1724.7	1458.7	1215.9	1094.3	905.1	828.2	706.6
C150.0	1943.6	1802.7	1527.3	1274.5	1159.7	761.3	761.3	740.6	653.3	595.1
C180.0	2433.1	2129.5	1976.5	1679.3	1398.9	1269.5	1041.3	860.4	789.2	684.1
C210.0	2197.8	1892.8	1580.6	1442.9	1193.3	1084.6	901.2	763.1	710.6	631.2
C240.0	1614.9	1328.5	1086.8	897.2	759.6	759.6	667.6	634.4	564.3	564.3
C270.0	1886.7	1597.1	1453.7	1193.0	1068.9	883.6	752.8	703.4	634.0	609.0
C300.0	1420.4	1169.4	1062.4	884.4	755.6	707.7	636.9	613.3	577.9	550.7
C330.0	1743.3	1456.2	1326.4	1095.7	911.5	837.9	725.2	679.1	620.1	581.5
C360.0	1353.2	1230.2	1018.1	759.9	759.9	729.5	654.8	604.7	585.8	553.6

Light intensity data Unit[cd]

C\G	G60.0	G61.0	G62.0	G63.0	G64.0	G65.0	G66.0	G67.0	G68.0	G69.0
C0.0	539.6	502.4	478.1	478.1	453.4	440.9	414.8	387.6	374.4	348.8
C30.0	517.8	500.3	472.0	459.2	433.8	408.4	395.9	370.8	359.0	336.3
C60.0	584.7	541.8	525.3	496.0	469.2	458.1	432.7	419.5	393.4	367.3
C90.0	556.8	520.7	491.3	452.0	452.0	426.3	412.7	385.9	359.0	345.8
C120.0	660.1	589.7	542.1	523.2	491.0	477.4	457.7	426.6	413.4	388.4
C150.0	572.5	535.7	519.6	489.9	476.0	449.2	422.3	408.7	382.3	357.6
C180.0	643.3	589.0	550.0	518.9	505.3	478.8	466.0	458.1	414.1	400.9
C210.0	602.9	579.3	527.8	512.8	487.1	462.7	457.0	428.4	416.6	393.4
C240.0	534.6	509.9	498.5	475.6	464.5	441.6	418.0	393.7	382.3	370.5
C270.0	571.5	542.5	530.7	507.4	485.3	474.2	457.0	427.3	415.2	390.1
C300.0	537.5	513.5	489.9	478.1	455.2	430.6	418.8	395.2	373.0	361.9
C330.0	566.8	542.5	531.8	508.9	497.8	474.5	457.0	457.0	414.1	401.2
C360.0	539.6	502.4	478.1	478.1	453.4	440.9	414.8	387.6	374.4	348.8
C\G	G70.0	G71.0	G72.0	G73.0	G74.0	G75.0	G76.0	G77.0	G78.0	G79.0
C0.0	336.3	311.8	286.2	275.6	249.2	220.9	192.2	177.5	147.2	131.1
C30.0	302.7	302.7	279.5	267.2	242.3	228.9	200.1	158.2	158.2	115.8
C60.0	354.4	329.1	315.4	290.6	278.2	253.1	227.3	214.1	184.7	169.7
C90.0	319.9	296.0	283.9	260.0	235.2	220.4	194.3	177.4	147.5	118.0
C120.0	363.7	352.2	329.3	317.8	293.6	268.0	242.3	228.9	199.9	169.9
C150.0	345.6	322.1	309.8	283.5	270.7	244.1	217.0	202.7	171.9	156.8
C180.0	374.8	362.3	339.2	316.1	304.6	281.0	268.7	242.5	226.7	197.0
C210.0	371.6	360.5	338.2	326.7	304.0	292.1	266.7	239.6	225.3	196.2
C240.0	347.6	323.5	311.6	273.4	260.7	247.4	219.9	191.1	176.0	144.7
C270.0	365.1	352.7	327.0	316.6	291.9	268.1	256.2	231.3	217.7	189.2
C300.0	339.8	328.3	303.5	278.8	266.0	237.6	220.1	191.6	174.9	144.8
C330.0	376.2	351.6	339.5	314.3	301.6	275.2	246.5	232.6	204.0	189.4
C360.0	336.3	311.8	286.2	275.6	249.2	220.9	192.2	177.5	147.2	131.1
C\G	G80.0	G81.0	G82.0	G83.0	G84.0	G85.0	G86.0	G87.0	G88.0	G89.0
C0.0	74.7	71.3	57.9	32.0	21.0	3.0	1.7	1.8	1.9	2.1
C30.0	75.9	75.9	59.6	34.9	23.5	5.9	0.6	0.6	0.6	0.6
C60.0	139.9	124.8	124.8	68.4	54.5	46.2	20.6	7.5	0.7	0.6
C90.0	75.8	72.3	58.9	33.8	11.1	6.6	0.8	0.6	0.6	0.6
C120.0	154.6	124.9	124.9	81.8	54.9	47.0	22.4	8.7	0.8	0.6
C150.0	110.8	75.5	75.5	52.6	29.5	13.2	6.9	0.6	0.6	0.6
C180.0	166.7	151.7	119.3	103.5	74.7	47.1	47.1	12.4	1.0	0.6
C210.0	181.1	150.6	120.2	90.6	75.8	48.3	26.5	17.8	1.8	1.8
C240.0	116.8	103.1	74.8	51.0	38.3	16.2	8.2	1.6	1.7	1.8
C270.0	160.9	146.4	116.6	116.6	72.1	59.1	46.0	12.4	1.9	1.9
C300.0	115.7	101.3	73.0	59.6	33.4	10.4	3.5	1.7	1.8	2.0
C330.0	159.0	129.1	114.4	85.4	58.1	46.7	22.2	4.4	1.9	2.0
C360.0	74.7	71.3	57.9	32.0	21.0	3.0	1.7	1.8	1.9	2.1

Light intensity data Unit[cd]

C\G	G90.0									
C0.0	2.1									
C30.0	0.6									
C60.0	0.6									
C90.0	0.6									
C120.0	0.6									
C150.0	0.6									
C180.0	0.6									
C210.0	1.9									
C240.0	1.9									
C270.0	2.1									
C300.0	2.1									
C330.0	2.1									
C360.0	2.1									

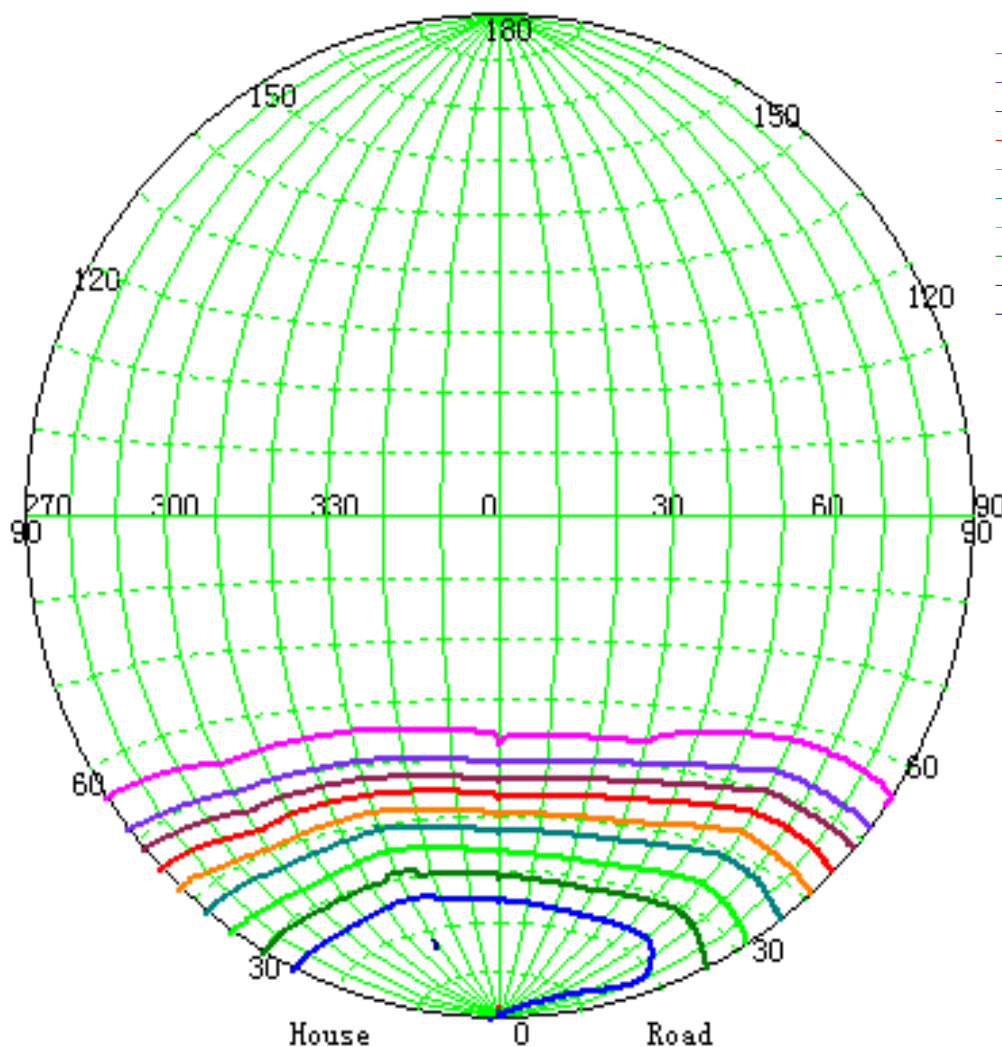
Zonal Luminous Flux Data

Gamma [°]	I _{mean} [cd]	Zonal Flux [lm]	Sum Flux [lm]	Zonal Flux [%]	Sum Flux [%]
0.0	6877.83	0.00	0.00	0.00	0.00
0.0-1.0	6876.13	6.58	6.58	0.05	0.05
1.0-2.0	6873.45	19.73	26.32	0.16	0.21
2.0-3.0	6873.15	32.88	59.19	0.26	0.47
3.0-4.0	6882.39	46.04	105.24	0.36	0.83
4.0-5.0	6886.86	59.23	164.47	0.47	1.30
5.0-6.0	6894.61	72.43	236.90	0.57	1.87
6.0-7.0	6908.61	85.68	322.57	0.68	2.54
7.0-8.0	6918.15	98.96	421.53	0.78	3.32
8.0-9.0	6931.86	112.25	533.78	0.88	4.21
9.0-10.0	6943.18	125.56	659.34	0.99	5.20
10.0-11.0	6955.99	138.88	798.22	1.09	6.29
11.0-12.0	6970.60	152.24	950.46	1.20	7.49
12.0-13.0	6982.22	165.58	1116.04	1.30	8.79
13.0-14.0	6992.65	178.88	1294.92	1.41	10.20
14.0-15.0	6998.01	192.07	1486.99	1.51	11.72
15.0-16.0	6999.50	205.10	1692.09	1.62	13.33
16.0-17.0	6995.33	217.94	1910.03	1.72	15.05
17.0-18.0	6982.22	230.46	2140.49	1.82	16.87
18.0-19.0	6954.80	242.48	2382.97	1.91	18.78
19.0-20.0	6916.96	253.89	2636.86	2.00	20.78
20.0-21.0	6862.12	264.59	2901.44	2.08	22.86
21.0-22.0	6790.01	274.35	3175.79	2.16	25.02
22.0-23.0	6698.82	283.03	3458.82	2.23	27.25
23.0-24.0	6591.54	290.57	3749.40	2.29	29.54
24.0-25.0	6465.48	296.89	4046.28	2.34	31.88
25.0-26.0	6340.02	302.28	4348.56	2.38	34.26
26.0-27.0	6188.04	306.50	4655.06	2.42	36.68
27.0-28.0	6051.85	309.89	4964.95	2.44	39.12
28.0-29.0	5903.45	312.78	5277.73	2.46	41.59
29.0-30.0	5743.72	314.47	5592.20	2.48	44.06
30.0-31.0	5603.36	315.77	5907.98	2.49	46.55
31.0-32.0	5436.48	316.28	6224.25	2.49	49.04
32.0-33.0	5282.41	315.78	6540.04	2.49	51.53
33.0-34.0	5128.34	315.06	6855.10	2.48	54.02
34.0-35.0	4987.98	314.18	7169.27	2.48	56.49
35.0-36.0	4796.36	311.54	7480.81	2.45	58.95
36.0-37.0	4642.59	307.85	7788.65	2.43	61.37
37.0-38.0	4470.94	304.20	8092.85	2.40	63.77
38.0-39.0	4286.48	298.92	8391.77	2.36	66.12
39.0-40.0	4116.62	293.07	8684.84	2.31	68.43

Zonal Luminous Flux Data

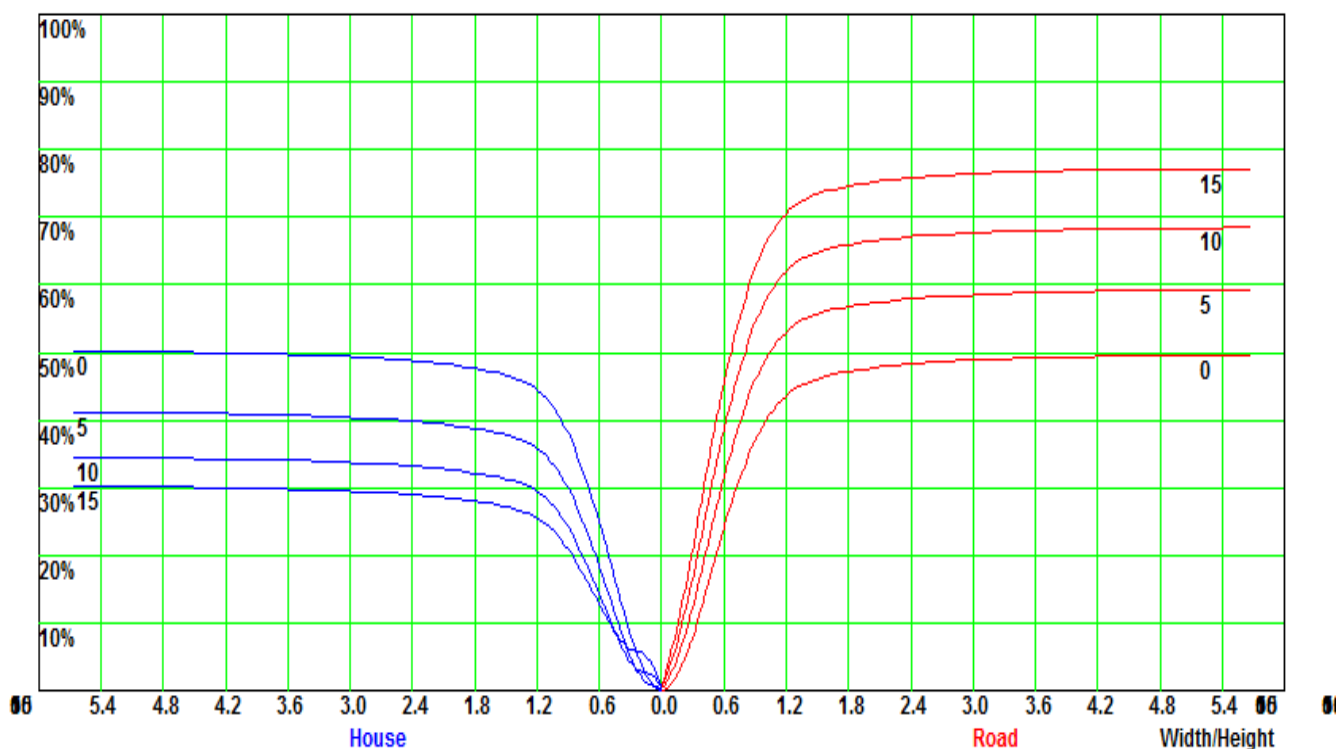
Gamma [°]	I _{mean} [cd]	Zonal Flux [lm]	Sum Flux [lm]	Zonal Flux [%]	Sum Flux [%]
40.0-41.0	3895.80	285.32	8970.15	2.25	70.68
41.0-42.0	3727.16	276.96	9247.11	2.18	72.86
42.0-43.0	3514.77	268.26	9515.38	2.11	74.98
43.0-44.0	3319.49	257.94	9773.32	2.03	77.01
44.0-45.0	3086.24	246.18	10019.50	1.94	78.95
45.0-46.0	2834.55	231.55	10251.05	1.82	80.77
46.0-47.0	2614.89	216.74	10467.79	1.71	82.48
47.0-48.0	2374.52	201.70	10669.48	1.59	84.07
48.0-49.0	2125.78	184.81	10854.29	1.46	85.53
49.0-50.0	1880.22	167.02	11021.31	1.32	86.84
50.0-51.0	1643.91	149.10	11170.42	1.17	88.02
51.0-52.0	1424.52	131.67	11302.08	1.04	89.06
52.0-53.0	1232.54	115.58	11417.67	0.91	89.97
53.0-54.0	1046.35	100.44	11518.11	0.79	90.76
54.0-55.0	907.24	87.20	11605.32	0.69	91.44
55.0-56.0	810.39	77.61	11682.93	0.61	92.06
56.0-57.0	724.12	70.16	11753.09	0.55	92.61
57.0-58.0	660.26	64.02	11817.11	0.50	93.11
58.0-59.0	604.56	59.13	11876.24	0.47	93.58
59.0-60.0	574.01	55.68	11931.92	0.44	94.02
60.0-61.0	538.94	53.11	11985.03	0.42	94.44
61.0-62.0	513.10	50.69	12035.73	0.40	94.84
62.0-63.0	491.68	48.87	12084.60	0.39	95.22
63.0-64.0	472.54	47.31	12131.91	0.37	95.59
64.0-65.0	451.89	45.75	12177.66	0.36	95.95
65.0-66.0	434.16	44.21	12221.87	0.35	96.30
66.0-67.0	413.24	42.61	12264.48	0.34	96.64
67.0-68.0	391.40	40.76	12305.24	0.32	96.96
68.0-69.0	371.84	38.94	12344.17	0.31	97.27
69.0-70.0	349.80	37.06	12381.24	0.29	97.56
70.0-71.0	332.72	35.28	12416.51	0.28	97.84
71.0-72.0	313.58	33.61	12450.12	0.26	98.10
72.0-73.0	293.38	31.74	12481.86	0.25	98.35
73.0-74.0	274.84	29.87	12511.73	0.24	98.59
74.0-75.0	253.07	27.89	12539.62	0.22	98.81
75.0-76.0	229.26	25.60	12565.23	0.20	99.01
76.0-77.0	207.29	23.27	12588.50	0.18	99.19
77.0-78.0	186.17	21.06	12609.56	0.17	99.36
78.0-79.0	160.22	18.61	12628.17	0.15	99.50
79.0-80.0	127.66	15.52	12643.69	0.12	99.63
80.0-81.0	110.58	12.88	12656.58	0.10	99.73

Iso-Candela [cd]

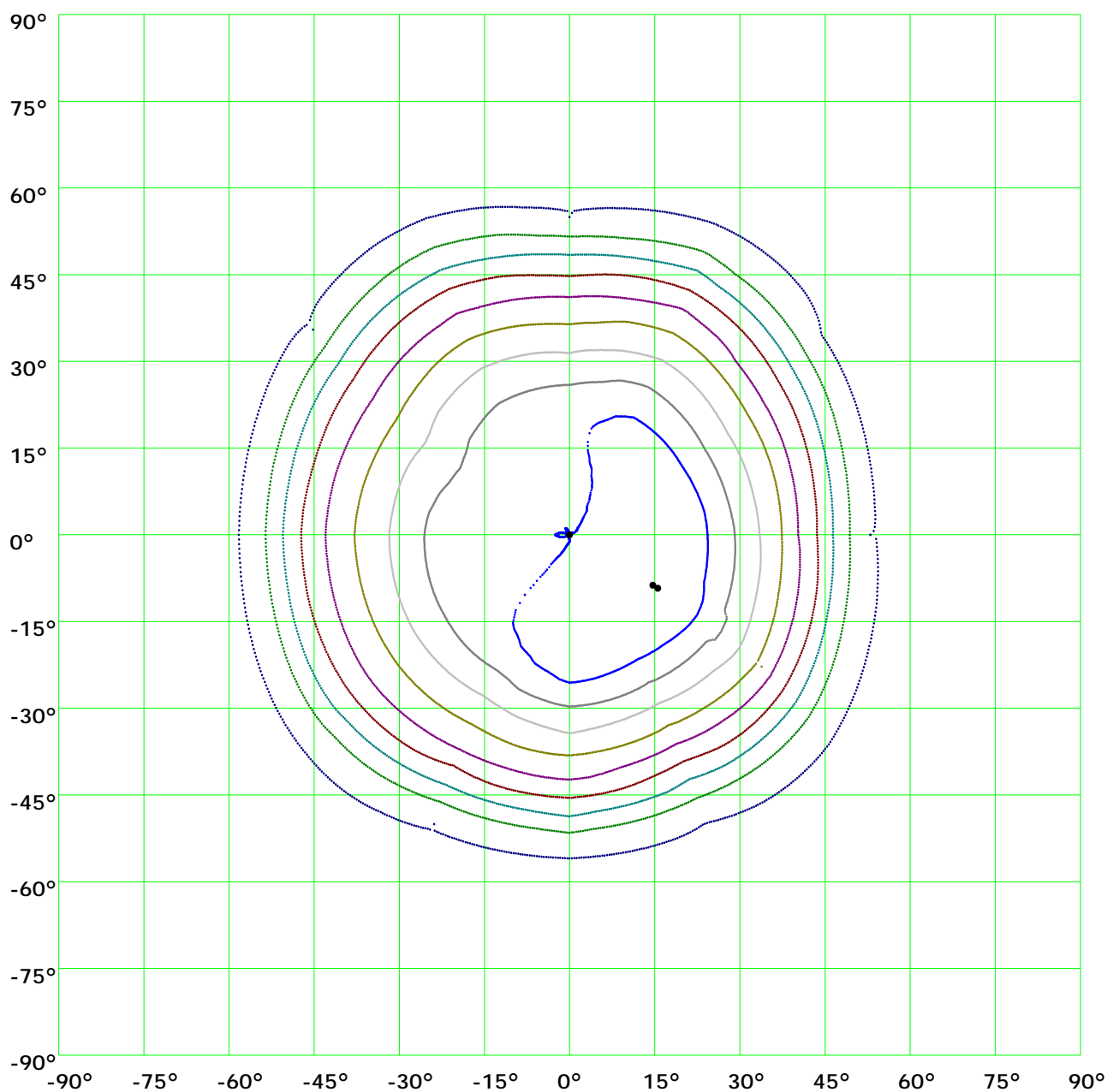


- (10%): 1.859541 cd
- (20%): 1.78802 cd
- (30%): 1.644978 cd
- (40%): 1.573458 cd
- (50%): 4.863414 cd
- (60%): 14.59024 cd
- (70%): 37.94178 cd
- (80%): 50.5652 cd
- (90%): 75.81205 cd
- (100%): 75.81205 cd

Coefficient Utilization Curve

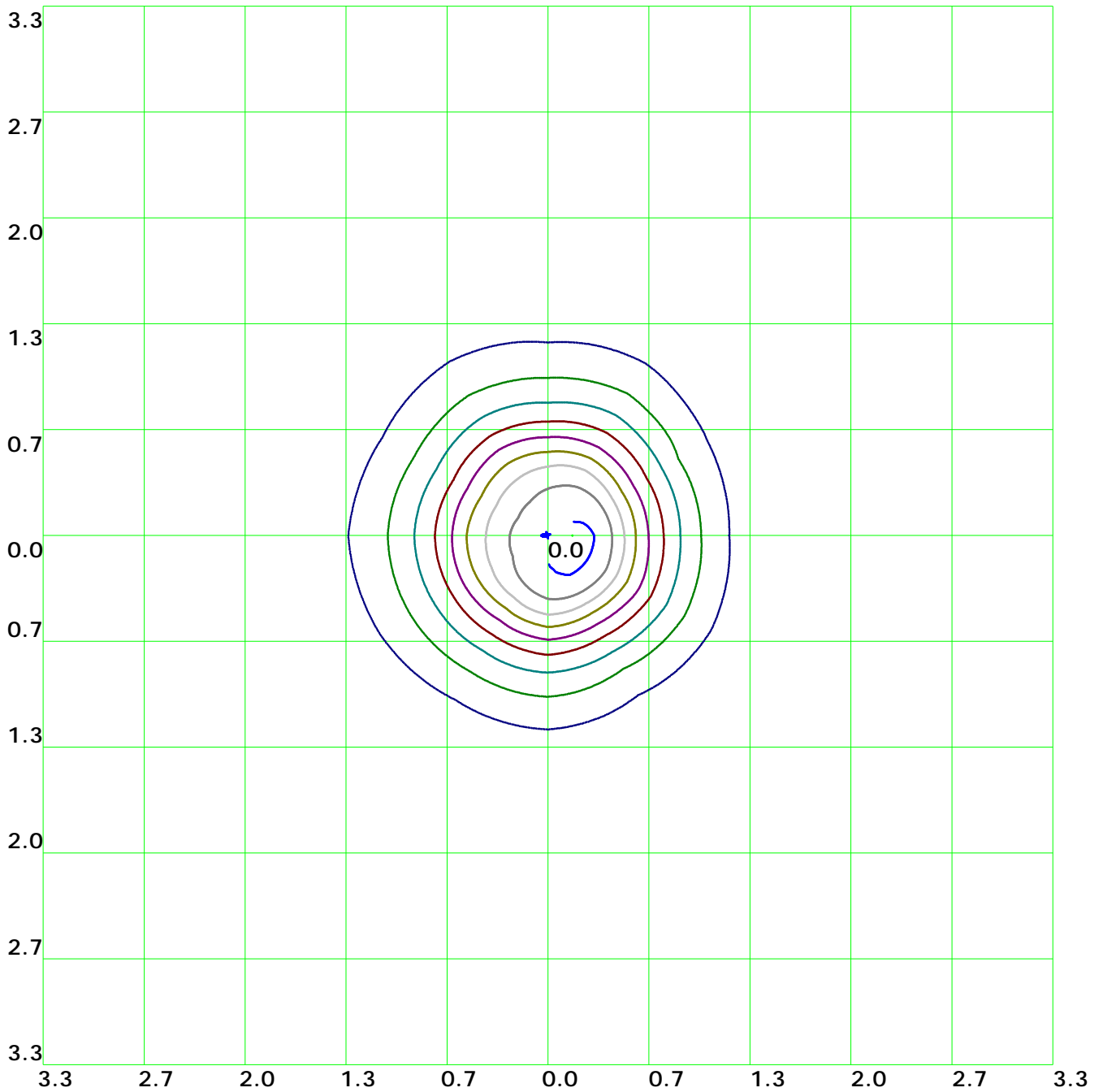


Isocandela(rectangle)



— (10%): 761.7cd	— (20%): 1523.4cd	— (30%): 2285.1cd	— (40%): 3046.8cd
— (50%): 3808.5cd	— (60%): 4570.2cd	— (70%): 5331.9cd	— (80%): 6093.6cd
— (90%): 6855.3cd	— (100%): 7617.cd		

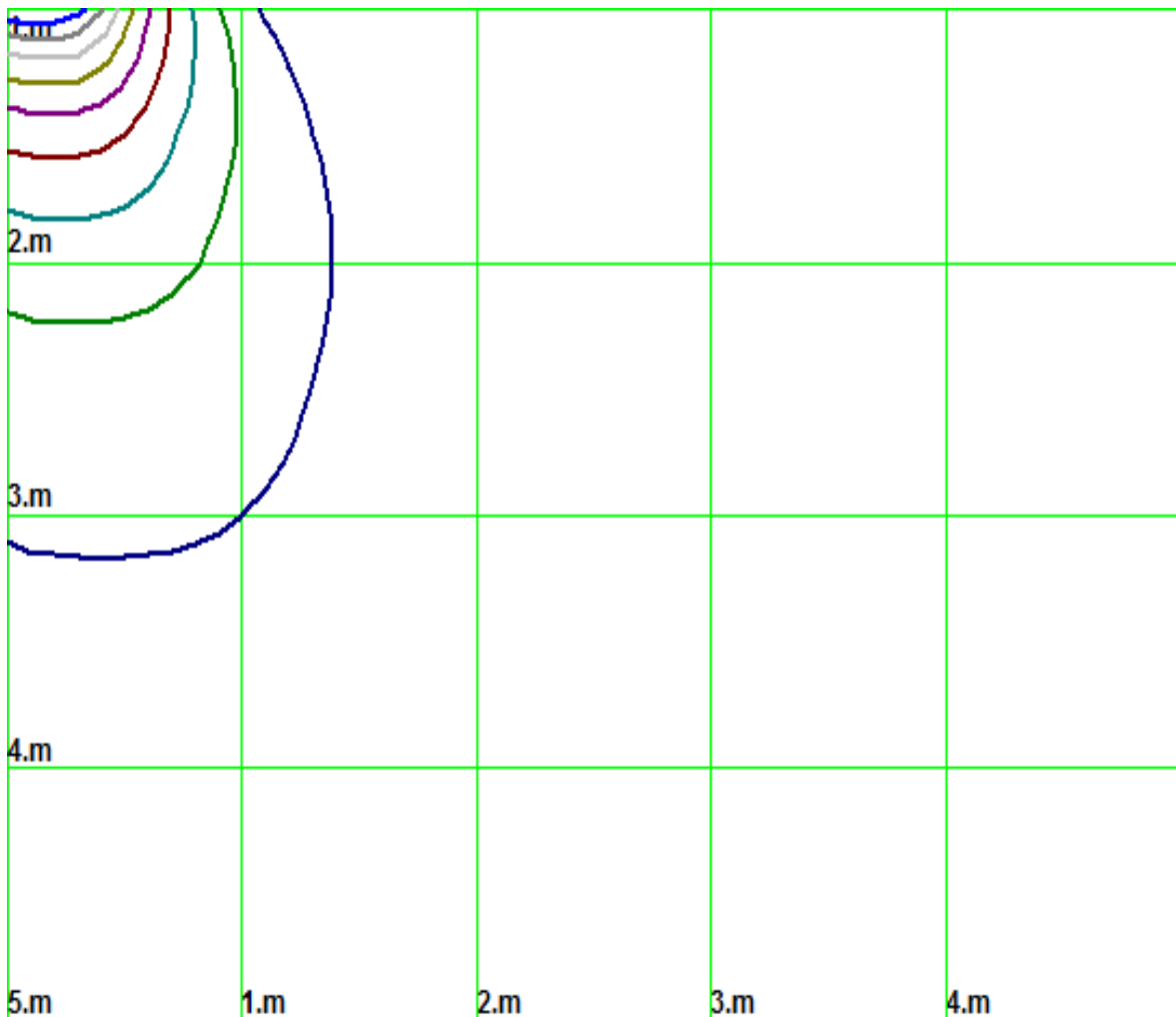
Isolx curve



Height: 1 m

- (10%): 761.7lx — (20%): 1523.4lx — (30%): 2285.1lx — (40%): 3046.8lx
- (50%): 3808.5lx — (60%): 4570.2lx — (70%): 5331.9lx — (80%): 6093.6lx
- (90%): 6855.3lx — (100%): 7609.4lx

Space Isolx Curve



— (10%): 761.7lx	— (20%): 1523.4lx	— (30%): 2285.1lx	— (40%): 3046.8lx
— (50%): 3808.5lx	— (60%): 4570.2lx	— (70%): 5331.9lx	— (80%): 6093.6lx
— (90%): 6855.3lx	— (100%): 7609.4lx		

Luminance Limiting Curve

Diameter: 0mm

Length: 0mm

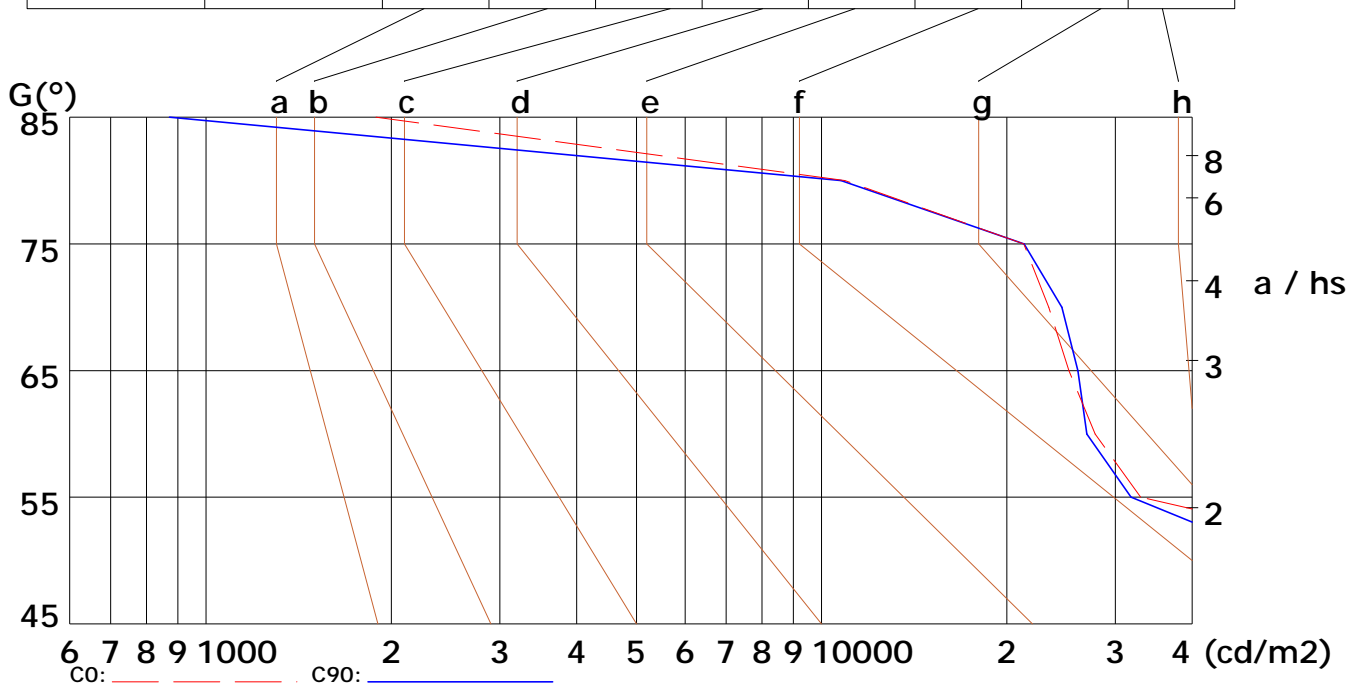
Width: 0mm

Height: 0mm

(cd/m²)

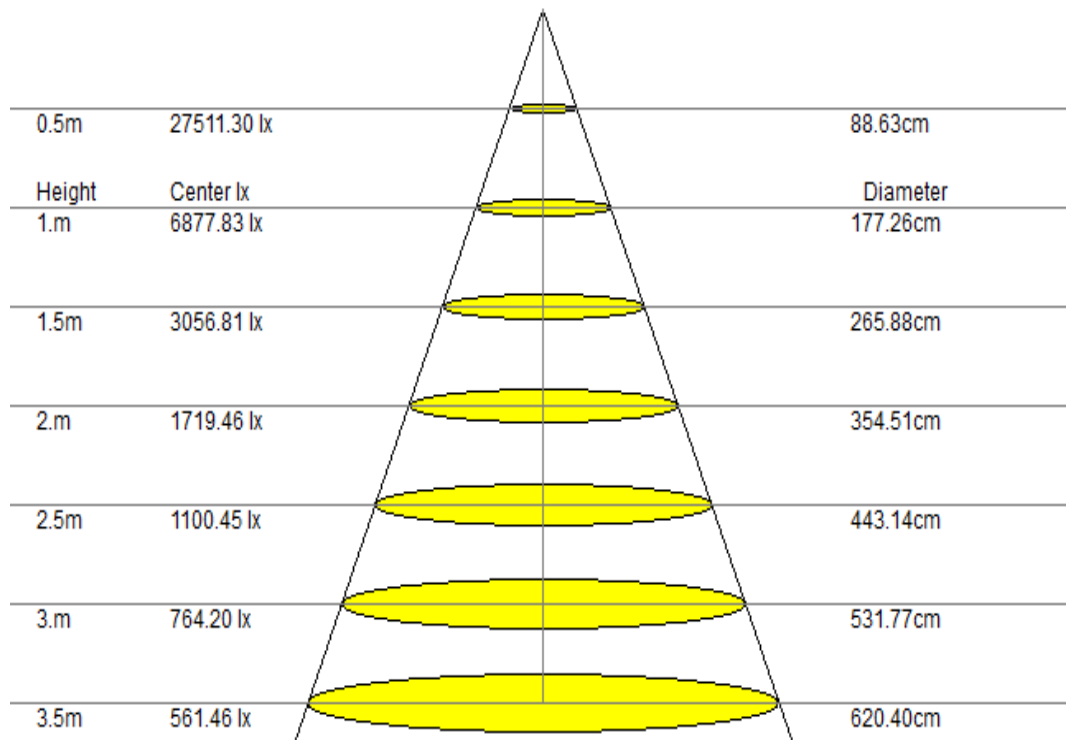
γ	45°	50°	55°	60°	65°	70°	75°	80°	85°
C0	10545	70960	32966	27839	25216	23384	21292	10909	1887
C90	97252	52629	31797	26981	26083	24579	21337	10755	872

Glare	Quality	Service Values Illuminance (lx)									
1.15	A	2000	1000	500	≤300						
1.5	B		2000	1000	500	≤300					
1.85	C			2000	1000	500	≤300				
2.2	D				2000	1000	500	≤300			
2.55	E					2000	1000	500	≤300		



Lum. Limiting Curve (C0/C90)

Lux-Distance Curve

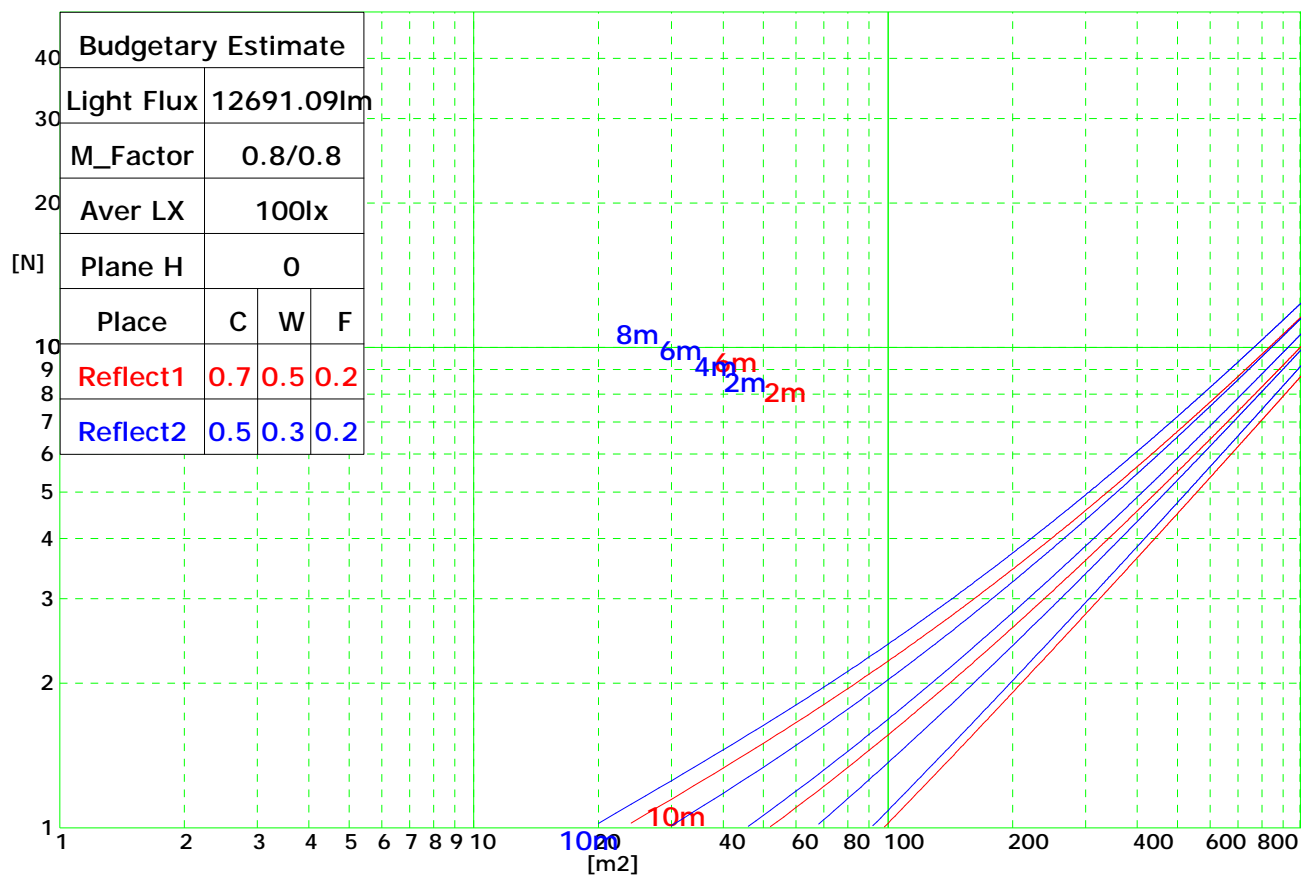


Beam Angle: 83.10°(50%Imax)

Coefficients of Utilization

RHOCC	80			70			50			30			10			0
RHOW	50	30	10	50	30	10	50	30	10	50	30	10	50	30	10	0
RCR	COEFFICIENTS OF UTILIZATION FOR RHOFC=20															
0	1.19	1.19	1.19	1.16	1.16	1.16	1.11	1.11	1.11	1.06	1.06	1.06	1.02	1.02	1.02	1.00
1	1.10	1.09	1.08	1.09	1.07	1.06	1.05	1.03	1.02	0.99	0.98	0.96	0.92	0.91	0.89	0.84
2	0.99	0.97	0.96	0.98	0.95	0.94	0.95	0.92	0.90	0.90	0.88	0.85	0.85	0.82	0.79	0.75
3	0.89	0.86	0.85	0.88	0.85	0.83	0.86	0.82	0.80	0.82	0.79	0.76	0.78	0.74	0.71	0.66
4	0.80	0.77	0.76	0.79	0.76	0.74	0.78	0.74	0.71	0.75	0.71	0.68	0.72	0.67	0.64	0.59
5	0.72	0.70	0.68	0.72	0.69	0.67	0.71	0.67	0.64	0.69	0.64	0.61	0.67	0.61	0.57	0.53
6	0.65	0.63	0.62	0.65	0.62	0.60	0.65	0.61	0.58	0.64	0.59	0.55	0.62	0.56	0.52	0.48
7	0.59	0.57	0.56	0.60	0.57	0.55	0.59	0.55	0.52	0.59	0.54	0.50	0.57	0.52	0.47	0.44
8	0.54	0.52	0.51	0.55	0.52	0.50	0.55	0.51	0.48	0.54	0.49	0.45	0.53	0.47	0.43	0.40
9	0.50	0.48	0.47	0.50	0.47	0.46	0.51	0.46	0.44	0.50	0.45	0.42	0.50	0.44	0.39	0.36
10	0.46	0.44	0.43	0.46	0.44	0.42	0.47	0.43	0.40	0.47	0.42	0.38	0.47	0.41	0.36	0.33

Indoor Budgetary Estimate Chart



UGR综合眩光指数表

Ceiling	70	70	50	50	30	70	70	50	50	30	
Wall	50	30	50	30	30	50	30	50	30	30	
Floor	20	20	20	20	20	20	20	20	20	20	
Room Size		Left to light axis direction of observation					Direction of light axis parallel observation				
X	Y										
2H	2H	14.0	15.0	14.2	15.0	15.4	13.9	15.0	14.1	15.0	15.4
	3H	15.3	16.4	15.8	16.7	17.0	15.3	16.4	15.6	16.9	17.0
	4H	16.0	17.1	16.4	17.5	17.7	16.0	17.0	16.3	17.5	17.8
	6H	16.5	17.5	17.0	17.9	18.0	16.4	17.3	16.8	17.8	18.1
	8H	16.9	17.9	17.2	17.9	18.2	16.8	17.7	17.0	18.0	18.3
4H	12H	17.0	17.8	17.2	18.2	18.5	16.8	17.6	17.0	18.1	18.5
	2H	14.8	15.7	15.0	16.0	16.2	14.8	15.7	14.9	15.8	16.0
	3H	16.6	17.4	16.8	17.3	17.7	16.4	17.2	16.6	17.4	17.8
	4H	17.2	17.9	17.5	18.0	18.5	17.0	17.8	17.3	18.2	18.4
	6H	17.7	18.4	18.2	18.7	19.0	17.7	18.3	17.9	18.6	19.0
8H	8H	17.9	18.7	18.4	18.8	19.2	18.0	18.5	18.2	18.8	19.2
	12H	18.2	18.8	18.6	19.1	19.3	18.2	18.6	18.5	19.0	19.4
	4H	17.6	18.1	17.8	18.3	18.8	17.3	18.0	17.7	18.3	18.7
	6H	18.3	18.7	18.6	19.1	19.5	18.1	18.8	18.7	19.1	19.4
	8H	18.7	19.1	19.0	19.3	19.7	18.5	18.8	18.9	19.4	19.8
12H	12H	18.8	19.4	19.3	19.6	20.1	18.8	19.2	19.1	19.5	19.9
	4H	17.5	18.1	17.9	18.4	18.8	17.4	17.9	17.7	18.5	18.8
	6H	18.5	18.9	18.8	19.1	19.5	18.3	18.7	18.7	19.1	19.5
	8H	18.8	19.2	19.1	19.5	20.0	18.8	19.2	19.1	19.5	20.0